

CON-E-CO®

An Oshkosh Corporation Company

SITE - PREP

LO PRO MODEL 327S-HP



SOLID PRODUCTS. SOLID PERFORMANCE.

237 N. 13TH ST - PO Box 430 - Blair, NE 68008

Phone (402)-426-4181 Fax: (402)-426-4180 Engineering Fax: (402)-426-4190

E-MAIL: sales@con-e-co.com WEBSITE: www.con-e-co.com

TABLE OF CONTENTS

FOOTING RECOMMENDATIONS	1
SPECIAL BRACING REQUIREMENTS, CHARGING RAMPS AND BUILDING, WATER REQUIREMENTS AND GENERAL NOTES	2
BAG FILTER REQUIREMENTS	3
ELECTRICAL REQUIREMENTS	4
FOUNDATION LAYOUT DRAWING	5



SOLID PRODUCTS. SOLID PERFORMANCE.

237 N. 13TH ST - PO Box 430 - Blair, NE 68008

Phone (402)-426-4181 Fax: (402)-426-4180 Engineering Fax: (402)-426-4190

E-MAIL: sales@con-e-co.com WEBSITE: www.con-e-co.com

FOOTING RECOMMENDATIONS

Adequate footings must be provided prior to set-up of plant. See plant assembly drawing, for column loadings, obtain a soil test and consult a professional Engineer for foundation design.

IMPORTANT:

BECAUSE OF THE RELATIVELY LARGE LOADS IMPOSED ON THE FOOTINGS, THE ALLOWABLE BEARING PRESSURE OF ALL UNDERLYING SOIL SHOULD BE DETERMINED AND OR CONFIRMED PRIOR TO AN APPROPRIATE FOOTING DESIGN. DUE CONSIDERATION FOR SETTLEMENT SHOULD BE INVESTIGATED INCLUDING THE POSSIBILITY OF A SOFT COMPRESSIBLE LAYER OF SOIL BENEATH THE TOP LAYER OF SOIL, AND ANY OTHER SOIL CHARACTERISTICS THAT MIGHT CAUSE EXCESSIVE SETTLEMENT. EXCESSIVE SETTLING OR THE LACK OF ADEQUATE UPLIFT RESTRAINT COULD CAUSE A DANGEROUS CATASTROPHE WITH COSTLY STRUCTURAL DAMAGE.

The customer is required to furnish steel leveling plates of no less than 3/4" x 10" x 10" material for each column required. If plant is to be permanently located CON-E-CO recommends installation of additional footings and piers to accommodate future expansion of bins.

NOTE: *Portable footings may be used, if a reputable professional engineer is consulted for design of the portable footings.*



SOLID PRODUCTS. SOLID PERFORMANCE.
237 N. 13TH ST - PO Box 430 - Blair, NE 68008
Phone (402)-426-4181 Fax: (402)-426-4180 Engineering Fax: (402)-426-4190
E-MAIL: sales@con-e-co.com WEBSITE: www.con-e-co.com

SPECIAL BRACING REQUIREMENTS

CON-E-CO structural supports, are designed for normal wind and adequate foundations. It may be necessary in some locations to provide additional bracing in order to comply with the design criteria of local codes for hurricane force winds or seismic loadings.

CHARGING RAMPS AND BUILDING

Charging ramps and buildings should be free standing and not dependent on the plant for structural support. CON-E-CO assumes no responsibility for damage to a plant caused by a charging ramp or building.

WATER REQUIREMENTS

The plant water may be obtained from city systems, well or surge tank. A minimum flow rate of approximately 100 to 150 GPM is advisable in order to maintain batching speed. CON-E-CO water meter will operate with much lower flow rates if required, approximately 30 GPM for 2" meter or 50 GPM for 3" meter. CON-E-CO recommends that a maximum pressure of 150 PSI not be exceeded. (The CON-E-CO water meter will handle water at temperatures ranging from 32 degrees F to 200 degrees F.) See Page 2 showing waterline location. (Location shown will work with or without CON-E-CO furnished water pump.)

GENERAL NOTES

CON-E-CO Structures are all designed to be mounted on level, rigid foundations. All foundations, permanent or temporary, must not allow more than 1/2" differential settlement or uplift between columns during or after repeated wind and/or live loads. Foundation loads are shown from specific plant configurations in site preparation drawings supplied by CON-E-CO. Added accessories such as cement silos, water tanks, conveyors, and dust control systems which are not shown on the plant's site preparation drawing cause higher stresses on the plant and larger foundation loads and/or uplifts. Consult CON-E-CO before adding anything to a plant not shown on its site preparation drawing.



SOLID PRODUCTS. SOLID PERFORMANCE.

237 N. 13TH ST - PO Box 430 - Blair, NE 68008

Phone (402)-426-4181 Fax: (402)-426-4180 Engineering Fax: (402)-426-4190

E-MAIL: sales@con-e-co.com WEBSITE: www.con-e-co.com

CON-E-CO®

An Oshkosh Corporation Company

PJC Series Silo Filter Vent MAINTENANCE & OPERATION

OPERATION

The CON-E-CO Pulse Jet Cartridge Series Silo Filter Vents are designed for continuous operation and cleaning.

CARTRIDGE CHAMBER

Contaminated air enters from the bottom of the cartridge chamber and flows from the outside toward the inside of the cartridges, leaving dust particles on the outside of the cartridges. Clean air exits through the top.

CARTRIDGE CLEANING

Cleaning of the cartridges is done one row at a time. Pulse jet valves are mounted on a manifold on the filter vent and control air to the blowpipes located above the rows of pulse jet cartridges. Holes in the blowpipes centered over each cartridge opening direct air downward through a venturi into the cartridges.

Cleaning of the cartridges is accomplished by a jet of air directed downward into the cartridges. The jet of air is short duration, high velocity and directs enough air volume to reverse the flow of air for a very short time to dislodge the dust from the outside of the cartridge.

AIR PRESSURE

Air pressure at the manifold (located on the filter vent) should be maintained at 90 to 100 psi. Less than 90 psi will reduce cleaning efficiency. Greater than 100 psi will cause excessive cartridge wear.

CONTROL

The pulse jet valves are controlled by an adjustable solid state timer board. (See timer instruction for technical and programming instructions) This timer board controls several functions as described below:

- ON TIME** Pulse duration: Time that a pulse jet valve is open
ON TIME less than 100 milliseconds will result in ineffective bag cleaning
ON TIME greater than 200 milliseconds will result in excessive air usage
- OFF TIME** Time between pulses:
Reducing the "OFF TIME" will keep the cartridge cleaner and decrease cartridge life.
Increasing the "OFF TIME" will allow more dust cake and increase cartridge life.

INITIAL SETTINGS

The filter vent timer control should initially be set as shown below. These settings should give the best balance of cleaning efficiency, air efficiency and cartridge life for most common applications.

ON TIME	150 milliseconds
OFF TIME	30 seconds



SOLID PRODUCTS. SOLID PERFORMANCE.
237 N. 13TH ST - PO Box 430 - Blair, NE 68008
Phone: 800-656-2651 Fax: 402-426-4181 Service/Parts Fax: (402)-533-9292
E-MAIL: parts@con-e-co.com WEBSITE: www.con-e-co.com

FIELD OPERATION

Recommended operation of a PJC Series Silo Filter Vent

Pulse (Cleaning) Operation: The cleaning cycle of the filter vent should be activated whenever material is being loaded into silo/bin. Cleaning operation should continue for approximately five to ten minutes after loading operation has finished.

Blower Operation (if equipped): If the silo filter vent is equipped with a blower the blower will need to be activated during loading operation. Blower can be turned off once loading has been completed. To load a silo/bin with a blower on the filter vent the blower does not need to be activated to load but it will increase the speed at which loading takes place.

FILTER CARTRIDGE MAINTENANCE

The filter vent cartridges should be removed and inspected for tears or excessive buildup of material.

A visual inspection of the discharge air from the silo vent at the time a cement or flyash truck is unloading should be made on a daily basis. If it appears that dust is escaping the filter cartridges they should be removed for a visual inspection.

Filter vent equipped with a magnehelic gauge: A silo filter vent may be equipped with an optional magnehelic gauge to measure resistance to air flow through the cartridge filter media. If the filter vent is equipped with a magnehelic gauge the normal pressure should be observed and recorded at the time that a load of cement is being delivered. Normal pressure will vary between delivery trucks because the CFM of the blowers may differ. Therefore gauge pressure for a given blower CFM needs to be recorded. After several recordings from trucks of a given CFM, a normal pressure will be determined. After the normal pressure is determined, the gauge pressure should be checked (at the time a truck is unloading) on a weekly basis to determine if the pressure is abnormally high or low (2 inches of water above or below the established normal pressure).

If the magnehelic gauge indicates a pressure out of the normal range as described above, the filter cartridges should be removed for a visual inspection.

Regular inspection of the filter vent should be at a maximum of six month interval. General inspection of wiring, condition of door gaskets and caulked connections should be made. Also the filter cartridges should be removed for a visual inspection at this time.

SPARE PARTS

Parts should be ordered from manufacturer to insure compatibility. If parts are needed, obtain serial number from the name plate and call the factory. A complete detailed record of the vent is on file at CON-E-CO.

SAFETY INFORMATION

This CON-E-CO dust collector, like other industrial equipment, must be operated and maintained in accordance with our instructions and sound engineering practices. The user of this equipment must always be aware of the physical and chemical properties of the dust particles being collected. Materials or processes presenting such hazards must be identified by the user.



SOLID PRODUCTS. SOLID PERFORMANCE.
237 N. 13TH ST - PO Box 430 - Blair, NE 68008
Phone: 800-656-2651 Fax: 402-426-4181 Service/Parts Fax: (402)-533-9292
E-MAIL: parts@con-e-co.com WEBSITE: www.con-e-co.com

CON-E-CO®

An Oshkosh Corporation Company

PJC Series Batcher Filter Vent

MAINTENANCE & OPERATION

OPERATION

The CON-E-CO Pulse Jet Cartridge Series Silo Filter Vents are designed for continuous operation and cleaning when batcher is being discharged.

CARTRIDGE CHAMBER

Contaminated air enters from the bottom of the cartridge chamber and flows from the outside toward the inside of the cartridges, leaving dust particles on the outside of the cartridges. Clean air exits through the top.

CARTRIDGE CLEANING

A pulse jet valve is mounted on a manifold on the batcher vent and controls air to the blowpipe located above the row of pulse jet cartridges. Holes in the blowpipe centered over each cartridge opening direct air downward through a venturi into the cartridges.

Cleaning of the cartridge is accomplished by a jet of air directed downward into the cartridge. The jet of air is short duration, high velocity and directs enough air volume to reverse the flow of air for a very short time to dislodge the dust from the outside of the cartridge.

AIR PRESSURE

Air pressure at the manifold (located on the filter vent) should be maintained at 90 to 100 psi. Less than 90 psi will reduce cleaning efficiency: Greater than 100 psi will cause excessive cartridge wear.

CONTROL

The pulse jet valve is controlled by an adjustable timer (see electrical print) located in the plant service panel. The timer is installed to receive a signal from the limit switch located on the batcher discharge gate. When the discharge gate opens and the closed signal goes away the timer will send a signal to the pulse jet valve to pulse.

INITIAL SETTING

The timer should be set to 0.125 seconds.

ON TIME less than 100 milliseconds will result in ineffective bag cleaning

ON TIME greater than 200 milliseconds will result in excessive air usage

BATCHER VENT CARTRIDGE MAINTENANCE

The vent cartridges should be removed and inspected for tears or excessive buildup of material.

A visual inspection of the discharge air from the batcher vent at the time of weigh up should be made on a daily basis. If it appears that dust is escaping the filter cartridges they should be removed for a visual inspection.

Regular inspection of the filter vent should be at a maximum of six month intervals. General inspection of wiring, condition of door gaskets and caulked connections should be made. Also the filter cartridges should be removed for a visual inspection at this time.



SOLID PRODUCTS. SOLID PERFORMANCE.

237 N. 13TH ST - PO Box 430 - Blair, NE 68008

Phone: 800-656-2651 Fax: 402-426-4181 Service/Parts Fax: (402)-533-9292

E-MAIL: parts@con-e-co.com WEBSITE: www.con-e-co.com

SPARE PARTS

Parts should be ordered from manufacturer to insure compatibility. If parts are needed, obtain serial number from the name plate and call the factory. A complete detailed record of the vent is on file at CON-E-CO.

SAFETY INFORMATION

This CON-E-CO dust collector, like other industrial equipment, must be operated and maintained in accordance with our instructions and sound engineering practices. The user of this equipment must always be aware of the physical and chemical properties of the dust particles being collected. Materials or processes presenting such hazards must be identified by the user.



SOLID PRODUCTS. SOLID PERFORMANCE.
237 N. 13TH ST - PO Box 430 - Blair, NE 68008
Phone: 800-656-2651 Fax: 402-426-4181 Service/Parts Fax: (402)-533-9292
E-MAIL: parts@con-e-co.com WEBSITE: www.con-e-co.com

CON-E-CO®

An Oshkosh Corporation Company

SPECIFICATIONS FOR MODEL PJC-1200 CARTRIDGE DUST COLLECTOR ON THE LP327 D INCLUDES EFFECT OF DUCTING USED ON THE LP327 D WITH 15 HP 64 PBI 60 HZ SIZE 165 BLOWER

MODEL CON-E-CO-PCJ-1200

NUMBER OF CARTRIDGES	16
NOMINAL CARTRIDGE DIAMETER	8"
NOMINAL CARTRIDGE LENGTH	78"
TOTAL FILTRATION AREA	1216 SQ. FT.
MIN. DESIGN EFFICIENCY OF DUST COLLECTOR	99.9%
AIR TO CLOTH RATIO	5.5 TO 1.0
BLOWER HP	15 HP
STATIC PRESSURE DROP	7.2" (INCHES OF WATER)
BLOWER CAPACITY	6750 C.F.M.
DISCHARGE AREA	1.6 SQ. FT.
DISCHARGE VELOCITY	70.0 FT. / SEC.
DIRECTION OF AIR DISCHARGE	HORIZONTAL
DISCHARGE SHAPE	11 1/2" X 20" RECTANGLE
OUTLET MOISTURE CONTENT	IDEALLY ZERO
NORMAL OPERATING TEMP & PRESSURE	AMBIENT
CLEANING MECHANISM	PULSE JET
FREQUENCY OF CLEANING	VARIABLE

CARTRIDGE SPECIFICATIONS

CARTRIDGE DIAMETER	7 7/8 O.D.
CARTRIDGE LENGTH	78 3/4"
CONSTRUCTION	PLEATED
FIBER	SPUN BONDER POLYESTER
WEIGHT	8 OZ / SQ. YD.
PERMEABILITY (.5" WATER)	24 CFM

DISCHARGE INTO BAGS

CEMENT SILO

LB / HR
GR / FT³

INTO BAGS

.177 LB/YD³* ___ YD³/HR
.019 GR HR/LB FT³* ___ LB/HR

FLYASH SILO

LB / HR
GR / FT³

INTO BAGS

.115 LB/YD³* ___ YD³/HR
.019 GR HR/LB FT³* ___ LB/HR

CENTRAL MIX

LB / HR
GR / FT³

.153 LB/YD³* ___ YD³/HR
.019 GR HR/LB FT³* ___ LB/HR

TRUCK MIX

LB / HR
GR / FT³

.281 LB/YD³* ___ YD³/HR
.019 GR HR/LB FT³* ___ LB/HR

OUT OF BAGS

FOR ALL OUT OF BAGS VALUES, MULTIPLY THE INTO BAGS VALUES BY .001



SOLID PRODUCTS. SOLID PERFORMANCE.

237 N. 13TH ST - PO Box 430 - Blair, NE 68008

Phone: 800-656-2651 Fax: 402-426-4181 Service/Parts Fax: (402)-533-9292

E-MAIL: parts@con-e-co.com WEBSITE: www.con-e-co.com

CON-E-CO®

An Oshkosh Corporation Company

SPECIFICATIONS FOR MODEL PJC-300S CARTRIDGE DUST CONTROL

MODEL CON-E-CO-PJC-300S

NUMBER OF CARTRIDGES	8
NOMINAL CARTRIDGE DIAMETER	8"
NOMINAL CARTRIDGE LENGTH	40"
TOTAL FILTRATION AREA	304 SQ. FT.
MIN. DESIGN EFFICIENCY OF DUST COLLECTOR	99.9%
AIR TO CLOTH RATIO	5.0 TO 1.0 (CEMENT)
CAPACITY FOR CEMENT	1,500 C.F.M. (RECOMMENDED MAXIMUM)
CAPACITY FOR FYLASH	1000 C.F.M. (RECOMMENDED MAXIMUM)
DISCHARGE AREA	.67 SQ. FT.
DISCHARGE VELOCITY @1500 C.F.M.	38 FT. / SEC.
DIRECTION OF AIR DISCHARGE	DOWN WARD
DISCHARGE SHAPE	(2) 11/16 X 48" SLOTS (2) 5/8 x 30" SLOTS
NORMAL OPERATING DISCHARGE TEMP & PRESSURE	AMBIENT
OUTLET MOISTURE CONTENT	IDEALLY ZERO
CLEANING MECHANISM	PULSE JET
FREQUENCY OF CLEANING	VARIABLE

CARTRIDGE SPECIFICATIONS

CARTRIDGE DIAMETER	7 7/8" O.D.
CARTRIDGE LENGTH	39 1/4"
CONSTRUCTION	PLEATED
FIBER	SPUN BONDED POLYESTER
WEIGHT	8 OZ / SQ. YD.
PERMEABILITY (.5" WATER)	24 CFM/SQ FT

DISCHARGE INTO CARTRIDGES

CEMENT SILO

LB / HR
GR / FT³

INTO CARTRIDGES

.177 LB/YD³* __ YD³/HR
.078 GR HR/LB FT³* __ LB/HR

FLYASH SILO

LB / HR
GR / FT³

INTO CARTRIDGES

.115 LB/YD³* __ YD³/HR
.117 GR HR/LB FT³* __ LB/HR

OUT OF CARTRIDGES

FOR ALL OUT OF CARTRIDGES VALUES, MULTIPLY THE INTO CARTRIDGES VALUES BY .001

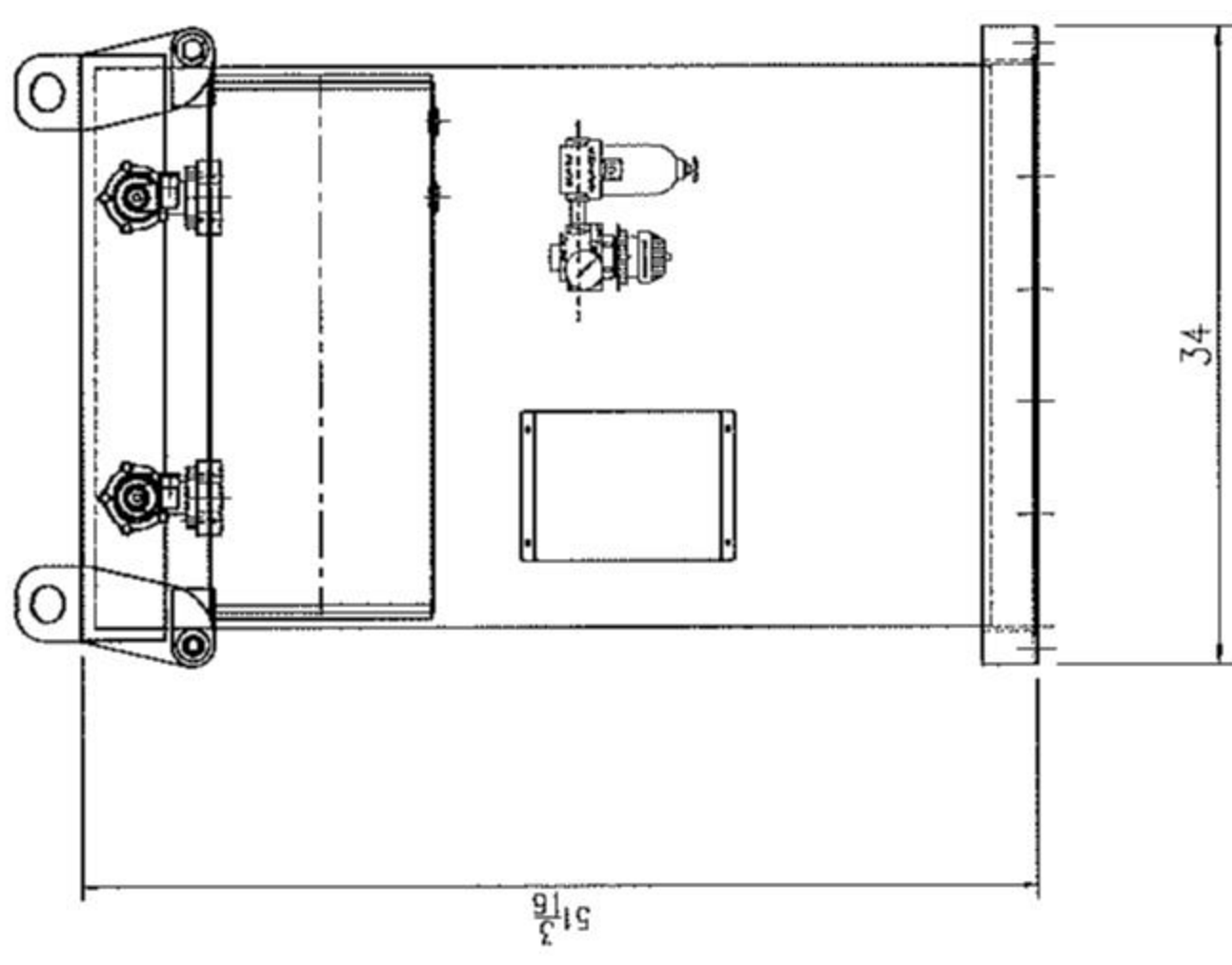
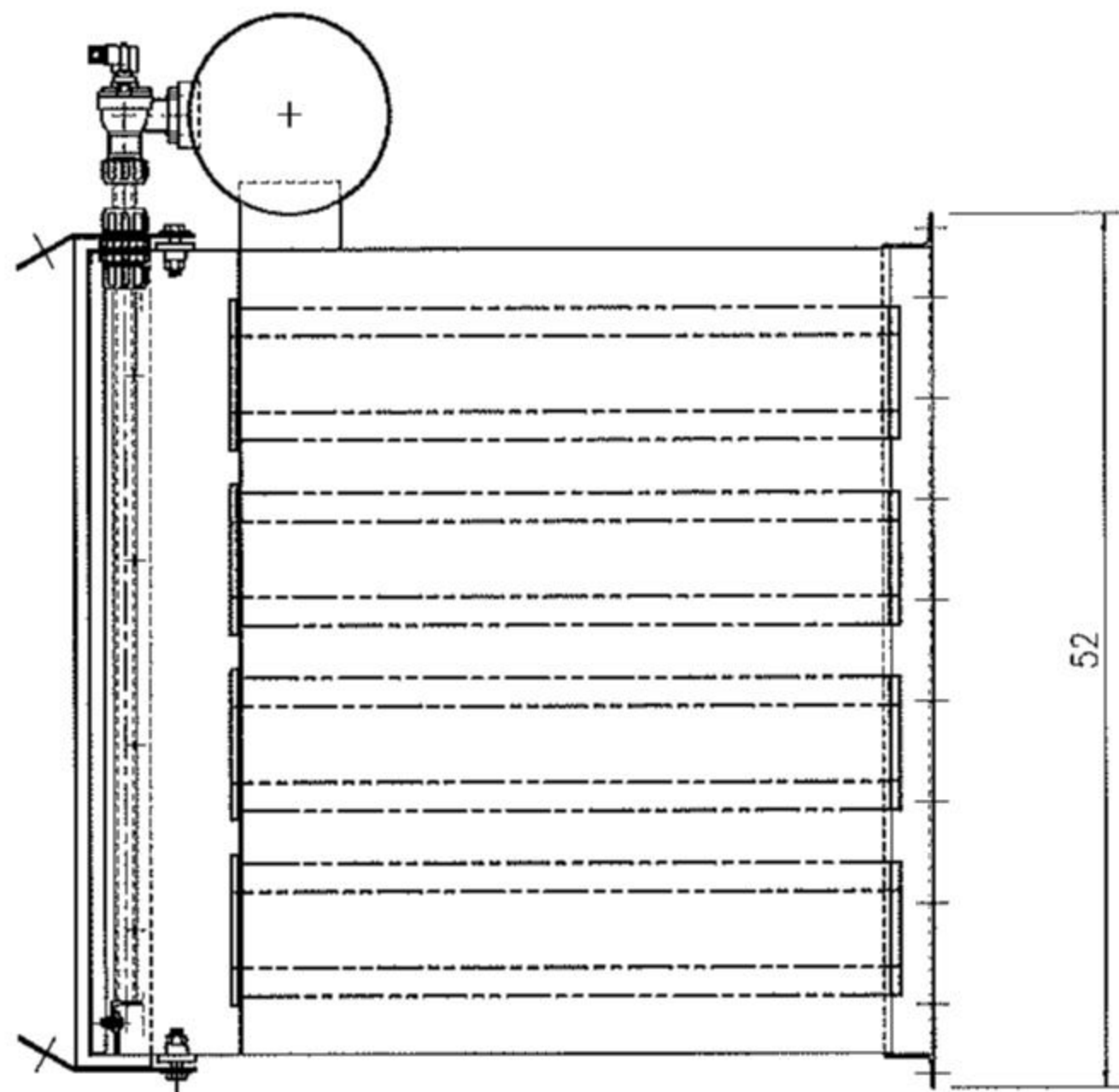


SOLID PRODUCTS. SOLID PERFORMANCE.

237 N. 13TH ST - PO Box 430 - Blair, NE 68008

Phone: 800-656-2651 Fax: 402-426-4181 Service/Parts Fax: (402)-533-9292

E-MAIL: parts@con-e-co.com WEBSITE: www.con-e-co.com



SCALE	1-1/2" = 1'-0"	DATE	3/23/2017	FILE	PJC-300S DIMS	JOB NO.		ITEM CODE		COPY	
ISSUED		DESIGNED		CUSTOMER	CON-ECO	CONTRACT		CONTRACT		PART NO.	
REVISION		CHECKED		LOCATION	BLAIR, NE	PROJECT		CONTRACT		DWGNO	
		APPROVED		CON-E-CO 127 N. 2nd St. Blair, NE 68009 402-833-2222 www.con-e-co.com							
				ALL DIMENSIONS ARE IN INCHES UNLESS OTHERWISE SPECIFIED. SEE DRAWING FOR DIMENSIONS OF PARTS.							

CON-E-CO.®

An Oshkosh Corporation Company

SPECIFICATIONS FOR MODEL PJC-80 CARTRIDGE DUST CONTROL

MODEL CON-E-CO-PJC-80

NUMBER OF CARTRIDGES	2
NOMINAL CARTRIDGE DIAMETER	12"
NOMINAL CARTRIDGE LENGTH	16"
TOTAL FILTRATION AREA	80.0 SQ. FT.
MIN. DESIGN EFFICIENCY OF DUST COLLECTOR	99.9%
AIR TO CLOTH RATIO	5.0 TO 1.0 (CEMENT)
CAPACITY FOR CEMENT	400 C.F.M.
DISCHARGE AREA	.20 SQ. FT.
DISCHARGE VELOCITY @400 C.F.M.	32.8 FT. / SEC.
DIRECTION OF AIR DISCHARGE	DOWN WARD
DISCHARGE SHAPE	13/16" X 36" SLOTS
NORMAL OPERATING DISCHARGE TEMP & PRESSURE	AMBIENT
OUTLET MOISTURE CONTENT	IDEALLY ZERO
CLEANING MECHANISM	PULSE JET
FREQUENCY OF CLEANING	VARIABLE

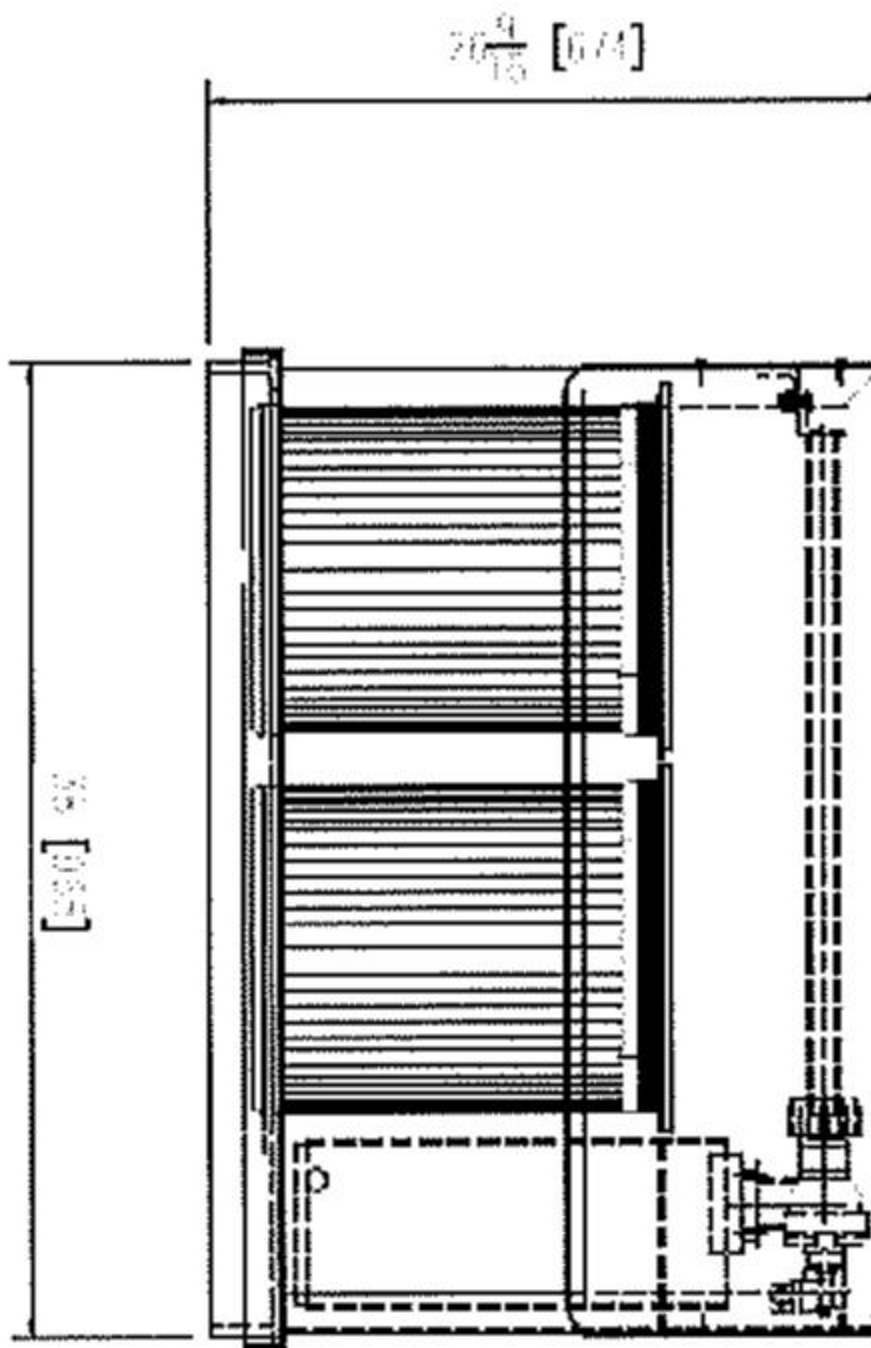
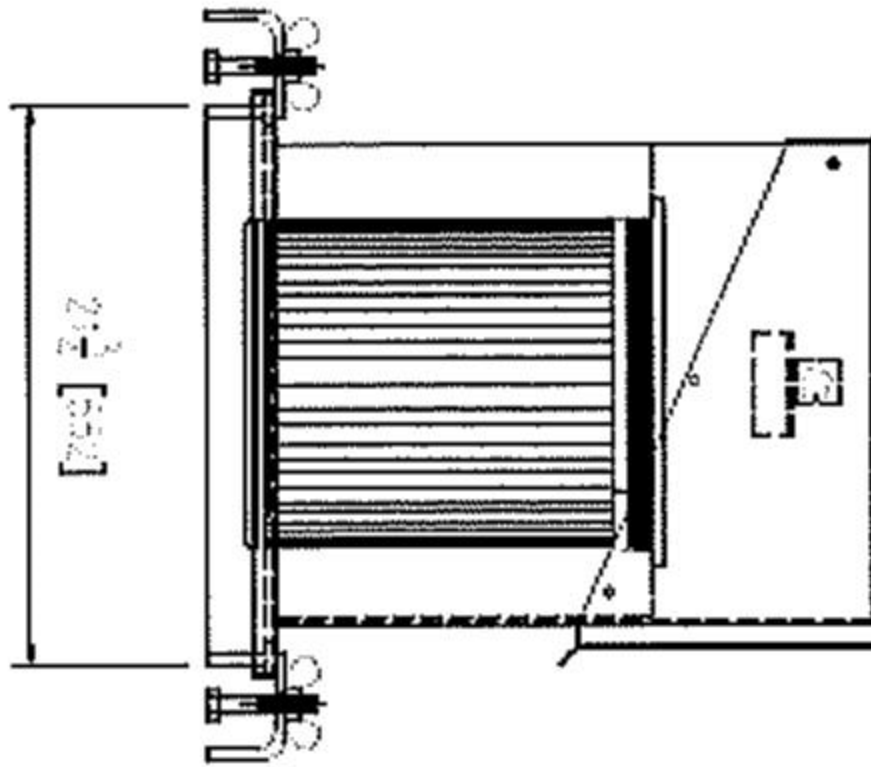
CARTRIDGE SPECIFICATIONS

CARTRIDGE DIAMETER	12" O.D.
CARTRIDGE LENGTH	16"
CONSTRUCTION	PLEATED
FIBER	SPUNBOND POLYESTER
WEIGHT	8 OZ / SQ. YD.
PERMEABILITY (.5" WATER)	24 CFM/SQ FT



SOLID PRODUCTS. SOLID PERFORMANCE.
237 N. 13TH ST - PO Box 430 - Blair, NE 68008
Phone: 800-656-2651 Fax: 402-426-4181 Service/Parts Fax: (402)-533-9292
E-MAIL: parts@con-e-co.com WEBSITE: www.con-e-co.com

REV	DATE	BY	CHKD	APP'D	DESCRIPTION
E					
D					
C					
B					
A					
DATE	7/30/2014	BY	CHKD	APP'D	
REV					
PJC-80 BATCHER VENT CON-E-CO BLAIR, NE CON-E-CO 237 N. 13 TH ST. - PO BOX 430 - BLAIR, NE 68008 (402) 533-9292 WWW.CON-E-CO.COM					
REV	DATE	BY	CHKD	APP'D	DESCRIPTION
E					
D					
C					
B					
A					



SOLID PRODUCTS. SOLID PERFORMANCE.
 237 N. 13TH ST - PO Box 430 - Blair, NE 68008
 Phone: 800-656-2651 Fax: 402-426-4181 Service/Parts Fax: (402)-533-9292
 E-MAIL: parts@con-e-co.com WEBSITE: www.con-e-co.com

ELECTRICAL REQUIREMENTS

It is very important to keep your electric utility company coordinated with your power requirements. The equipment listed below should be combined with other site loads such as area lighting, charging equipment, office HVAC, mixers, etc.

Setup for 460 Volt operation.

CONCRETE BATCH PLANT						Wire Size	
	HP	FLA	CB	Str	Heater	Min	Normal
15 KVA Transformer		32.61					
Cement 1 Feed A	20.00	27.00	60	#2	B40	8	8
Cement 1 Feed B	20.00	27.00	60	#2	B40	8	8
Cement Batcher	20.00	27.00	60	#2	B40	8	8
Agg Incline Conv.	20.00	27.00	60	#2	B40	8	8
Agg Batcher Belt	15.00	21.00	45	#2	B32	10	4
L. P. Blower	5.00	6.10	15	#0	B9.10	14	10
Air Compressor	15.00	21.00	45	#2	B32	10	4
Water Pump	15.00	21.00	45	#2	B32	10	4
Cust. Feed Screw	40.00	52.00	90	#3	CC74.6	6	6
Baghouse Blower	15.00	21.00	45	#2	B32	10	4
Reclaim Blower	6.70	8.10	20	#1	B11.5	14	8
Rotary Vane Feeder	0.75	1.60	15	#00	B2.40	14	12
<hr/>							
Total Connected	192.45	292.41					
+25% of Largest Motor	40.00	13.00				Actual	
Running Design Load		305.41	Running Design			243.33	KVA
+5 x Largest Motor		260.00					
Starting Design Load		565.41	Starting Design			450.47	KVA
<hr/>							
300 KVA Transf. Volt Drop=	5.48%	Starting, and			2.96%	when running.	
500 KVA Transf. Volt Drop=	3.29%	Starting, and			1.78%	when running.	

ELECTRICAL REQUIREMENTS

AUXILIARY DUST CONTROL							Wire Size	
	HP	FLA	CB	Str	Heater	Min	Normal	
Conveyor 1	20.00	27.0	60	#2	B40	8	8	
Conveyor 2	20.00	27.0	60	#2	B40	8	8	
Conveyor 3	20.00	27.0	60	#2	B40	8	8	
Conveyor 4	20.00	27.0	60	#2	B40	8	8	
Total Connected	80.00	108.00						
+25% of Largest Motor	20.00	6.75				Actual		
Running Design Load		114.75	Running Design			91.42	KVA	
+5 x Largest Motor		135.00						
Starting Design Load		249.75	Starting Design			198.98	KVA	
113 KVA Transf. Volt Drop=	6.45%	Starting, and			2.96%	when running.		
150 KVA Transf. Volt Drop=	4.84%	Starting, and			2.22%	when running.		

GRAND TOTAL						
	HP	FLA				
Total Connected	272.45	400.41				
+25% of Largest Motor	40.00	13.00			Actual	
Running Design Load		413.41	Running Design		329.37	KVA
+5 x Largest Motor		260.00				
Starting Design Load		673.41	Starting Design		536.52	KVA
300 KVA Transf. Volt Drop=	6.52%	Starting, and			4.01%	when running.
Note: This will create a	9.79%	continuous overload w/	listed items.			
500 KVA Transf. Volt Drop=	3.91%	Starting, and			2.40%	when running.
600 KVA Transf. Volt Drop=	3.26%	Starting, and			2.00%	when running.